

SUPPORT NOTE

17 APRIL 2015

R1 GNSS RECEIVER: ACTIVATING RTX USING THE GNSS STATUS UTILITY


In order to receive satellite or internet-based RTX™ ViewPoint subscription correction data on a Trimble® R1 GNSS receiver, an RTX activation code can be applied using one of two methods:

- GNSS Status utility
- TerraFlex Mobile app

This support note describes how to apply the activation code using the GNSS Status utility. For steps on how to perform this function using the TerraFlex Mobile App, refer to the support note [Activating an RTX Subscription for the R1 GNSS Receiver](#).

Applying the RTX Activation Code

Dependent on the platform used to connect to the R1 GNSS receiver, download the GNSS Status utility from the appropriate location. It is available under the [R1 GNSS Receiver Downloads](#) for the Windows® operating system, Android™ (in addition to Google Play™), and Windows Embedded Handheld devices, and in the Apple App Store or iOS devices. For information on how to pair and connect to the R1 GNSS receiver, refer to the support note [Pairing and Connecting the Receiver to a Device](#).

1. Pair and connect to the R1 GNSS receiver using the GNSS Status utility.
2. Tap  or flick the screen to the right to display the menu options.
3. Tap **Receiver Options**.
4. In the *Install Option* field, enter the RTX activation code received after purchase.
5. Tap **Submit**.

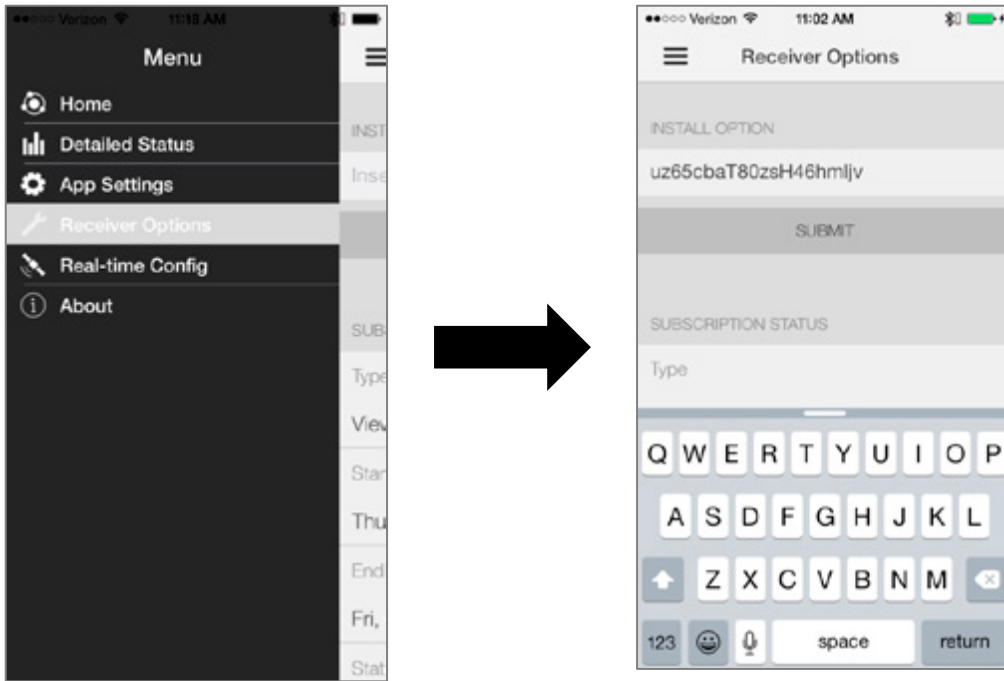
Note: There will be no visual confirmation in the GNSS Status utility that the RTX activation code was applied successfully; the code will disappear. You **do not** need to enter the code again. To check the status of the RTX subscription (depending on your device); proceed to the steps below using TerraFlex or TerraSync.

This document is for informational purposes only and is not a legally binding agreement or offer. Trimble makes no warranties and assumes no obligations or liabilities hereunder.

Geospatial Division, 10368 Westmoor Drive, Westminster, CO 80021, USA

© 2015, Trimble Navigation Limited. All rights reserved. Trimble and the Globe & Triangle logo are trademarks of Trimble Navigation Limited registered in the United States and in other countries. RTX, TerraFlex, and TerraSync are trademarks of Trimble Navigation Limited. Microsoft and are either registered trademarks or trademarks of Microsoft Corporation in the United States and/or other countries. All other trademarks are the property of their respective owners. SUP35895.





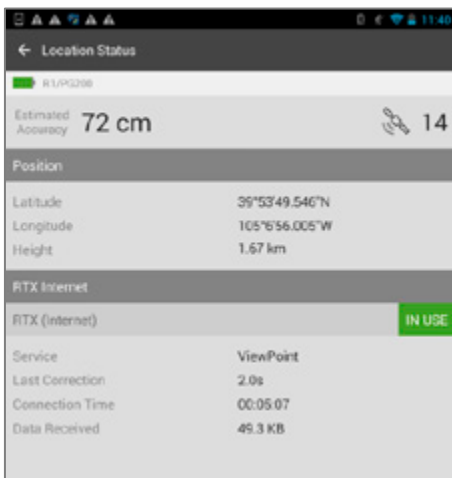
Confirming the RTX subscription using the TerraFlex software (available for all platforms)

The RTX subscription can be confirmed in two locations within the TerraFlex™ app when connected to the R1 GNSS receiver.

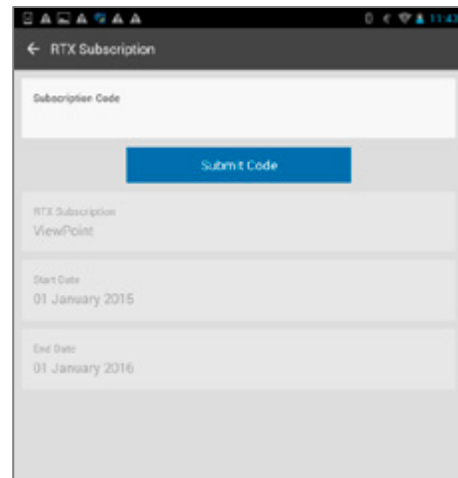
1. Disconnect from the R1 GNSS receiver in the GNSS Status utility, if it is still open and connected.
2. Open and sign into the TerraFlex Mobile software.
3. Connect to the R1 GNSS receiver by tapping on *Settings / Location Service*.
4. Navigate to the *Location Status* screen in the *TerraFlex* menu.
5. The RTX correction feed information appears underneath the position information with a Service (the R1 GNSS receiver only supports ViewPoint RTX), Last Correction, Connection Time, etc.

The RTX subscription information can be accessed in the *Subscription Status* option within the *Settings* screen when the TerraFlex software is actively connected to the R1 GNSS receiver. Information includes subscription type, Start Date, and End Date.

Within Location Status



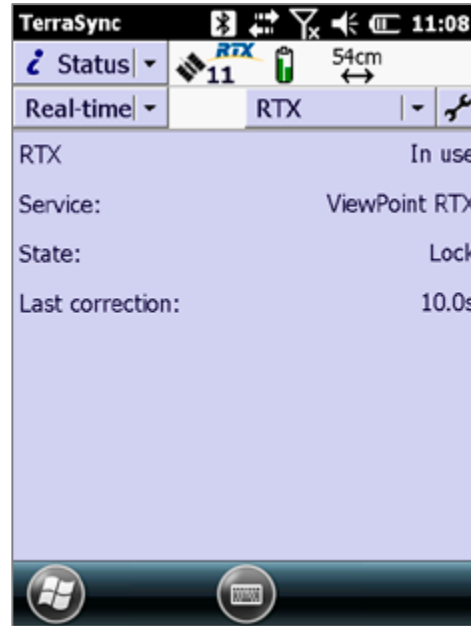
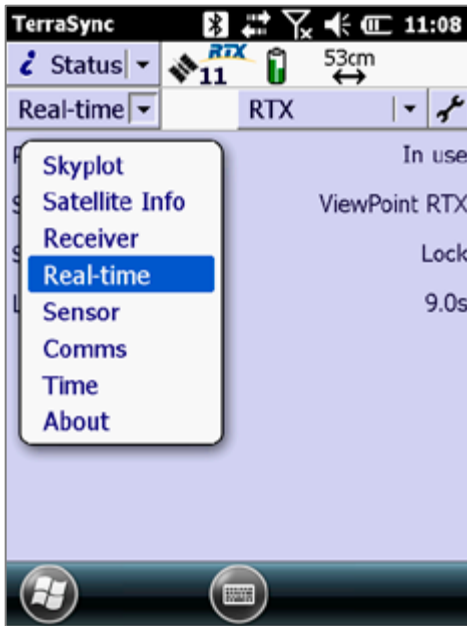
Within Subscription Status



Confirming the RTX subscription using TerraSync (not available for iOS and Android platforms)

The RTX subscription can be seen in the *Status / Real-time* screen within the TerraSync™ software when connected to the R1 GNSS receiver.

1. Disconnect from the R1 in the GNSS Status utility, if it is still open and connected.
2. Open TerraSync and navigate to *Setup / GNSS Settings*.
3. Connect to the appropriate Bluetooth COM port for the R1 GNSS receiver.
4. Once connected, navigate to the *Status / Real-time* screen.
5. Here it will show Subscription Type, Last Correction, Data Received, Start Date, End Date, etc.



For more information

For more information contact your local Trimble Distribution Partner.