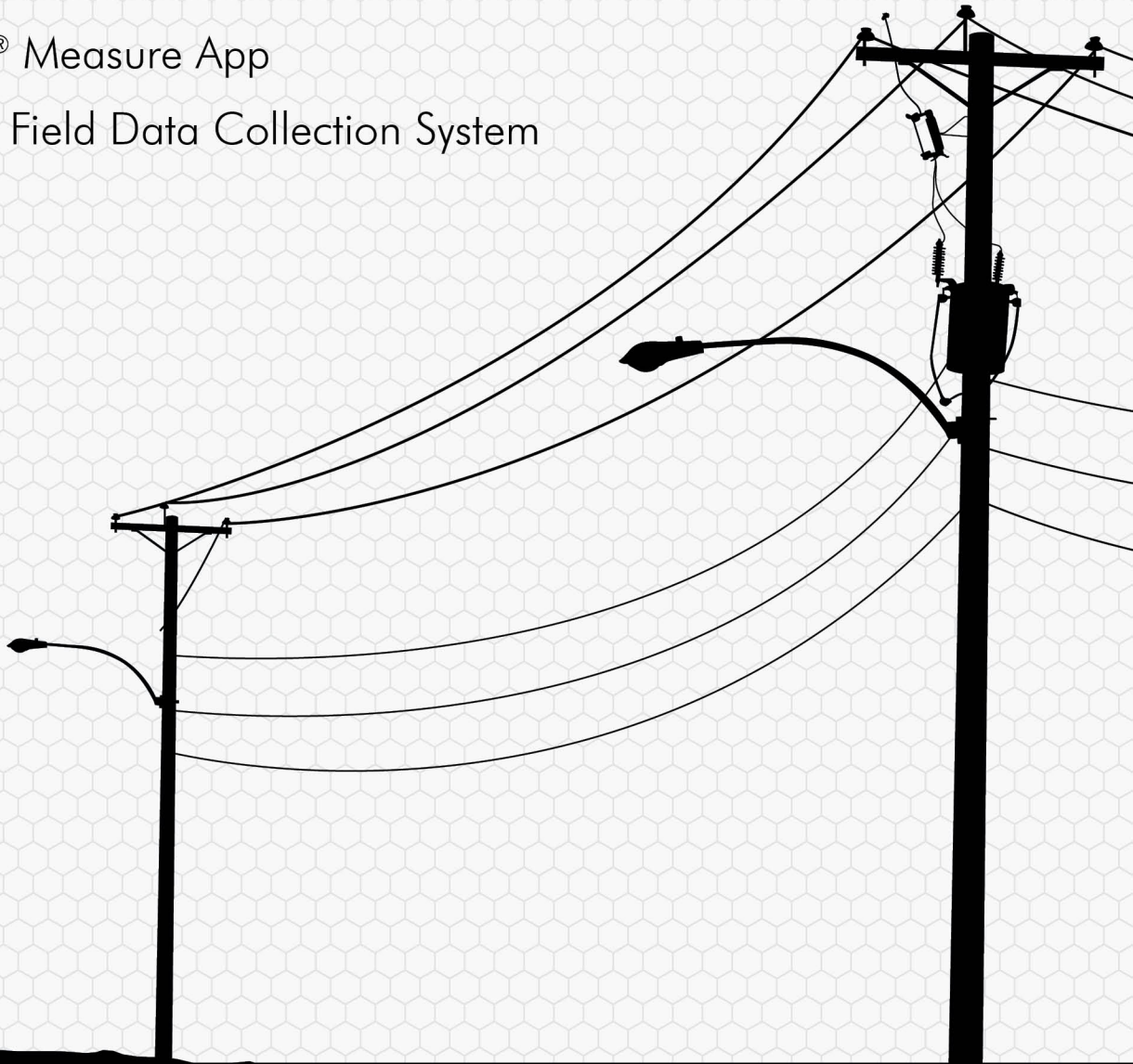


POLE AUDITS AND CO-LOCATION

- + TruPulse® Lasers
- + LaserSoft® Measure App
- + GeoJot+ Field Data Collection System



www.lasertech.com



www.geospatialexperts.com/lti.php

TruPulse® Lasers

All LTI lasers can acquire measurements directly to attachment points and anywhere along the lines, making it the most efficient and safest measurement solution available for pole audits.

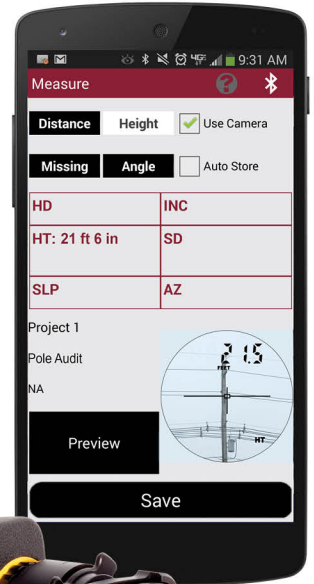
- Measures attachment heights, simple sags, mid-span clearances, spans between poles and more
- Increases worker safety with the ability to make measurements from a less-dangerous location
- Produces highly accurate and repeatable results for better consistency in field measurements
- Unaffected by high winds and other weather conditions that make hot sticks impossible to use



LaserSoft® Measure App

Capture, save and send measurements with scope shot pictures embedded into the file.

- Helps eliminate paper and pencil for recording field data
- Costs only \$9.99 (USD) and runs on smartphones and tablets (Android and iOS)
- Transfers data using Dropbox, email or cable connection



TRUPULSE® 200B
Calculates horizontal distance, height and 2-D missing line values. Has 7-power magnification and transfers data via Bluetooth®.



TRUPULSE® 200X
Achieves the highest level of accuracy and expands Bluetooth® compatibility to iOS. The in-scope display adjusts to any lighting condition, all in a rugged, waterproof housing.

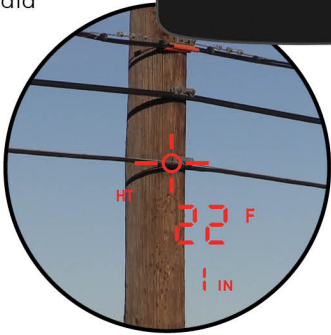
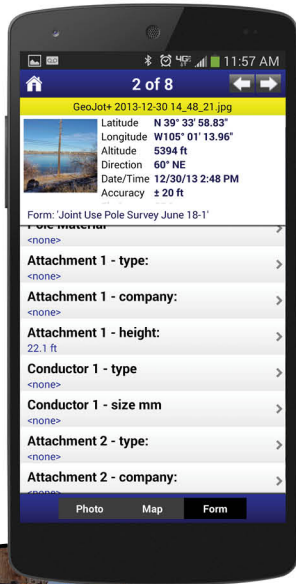


TRUPULSE® 360°R
Additionally measures azimuth with built-in compass and calculates 3-D missing line values. Transfers data via Bluetooth® and is rugged and waterproof.

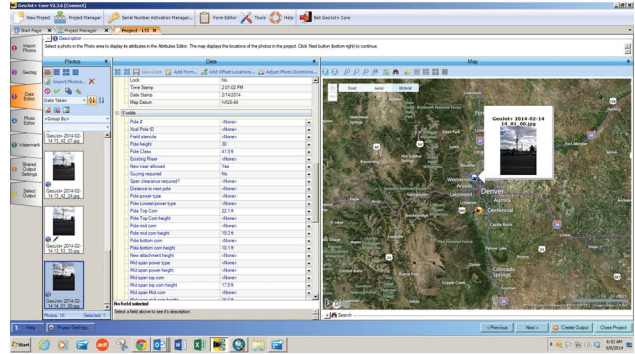
GeoJot+ Complete Field Data Collection System

Take your pole audits to a whole new level with the GeoJot+ app. Quickly collect geotagged photos, measurements from the laser and additional form data.

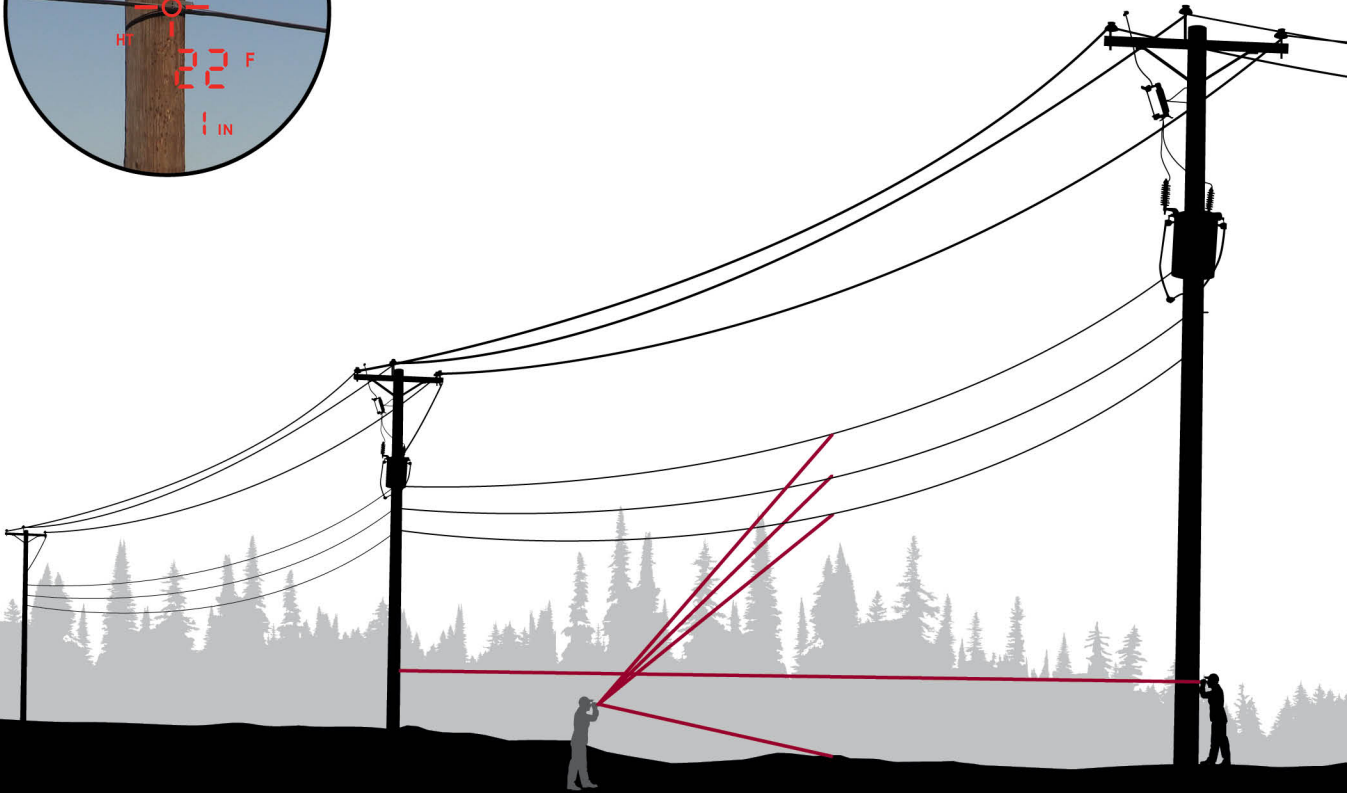
- Makes training easy with simple operation and workflow
- Allows you to create forms on your mobile device or distribute them to contractors or employees
- Automatically uploads data to the cloud for immediate access
- Displays GPS location and the accuracy level right on screen
- Accepts barcode data



The user-friendly GeoJot+ PC interface allows you to verify and edit data before creating reports, maps and input for backend databases.



- Easily transfers GeoJot+ app licenses between Apple, Android and Windows Mobile devices
- Creates ArcGIS® shapefiles and geodatabases as well as reports, .csv files and Google® Earth maps
- Allows you to measure additional height values from the photos taken in the field



ATTACHMENT HEIGHTS
Follow the TruPulse's simple three-shot height routine for the first attachment and just one shot for each additional attachment.



MID-SPAN CLEARANCE
Utilize LTI's reflectorless measurement technology to save yourself the time, money and energy of shutting down a roadway.



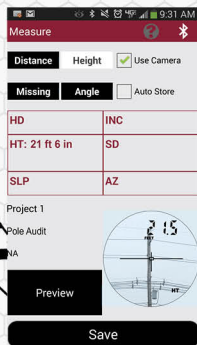
SPAN BETWEEN POLES
Stand at one pole and quickly shoot to the other, regardless of the accessibility or landscape between the poles.

TruPulse Laser Specifications



	TruPulse® 200B	TruPulse® 200X	TruPulse® 360°R
Measures Azimuth with TruVector Compass Technology	No	No	Yes (+/- 1° Typical)
Distance Accuracy to Typical Targets	+/- 30 cm (1 ft)	+/- 4 cm (1.6 in)	+/- 30 cm (1 ft)
Distance Accuracy to Very Distant/Weak Targets	+/- 0.3 to 1 m (1 to 3 ft)	+/- 4 to 30 cm (1.6 in to 1 ft)	+/- 0.3 to 1 m (1 to 3 ft)
Inclination Accuracy	+/- 0.25° Typical	+/- 0.1° Typical	+/- 0.25° Typical
Max Range to Non-Reflective Targets	1000 m (3,280 ft)	1900 m (6,233 ft)	1000 m (3,280 ft)
Bluetooth® Communication Port	Yes	Yes (iOS compatible)	Yes
Waterproof/Environmental	No / IP54	Yes / IP56	Yes / IP56
Available Colors	Yellow	Gray	Black

LaserSoft® Measure App



iOS version 5.0 or later

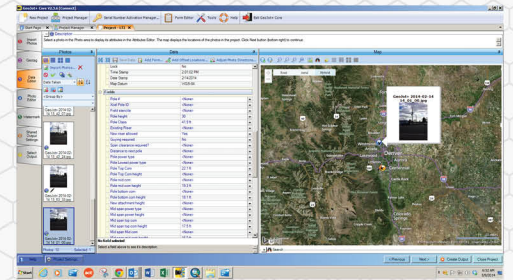
Check the App Store for latest device compatibility



Android™ version 2.2 and later

Works on most Android devices

GeoJot+ Field Data Collection System



For more information or a list of resellers or to download a free trial version, visit: www.geospatialexperts.com/lti.php

© LTI 2014 1360 EN