

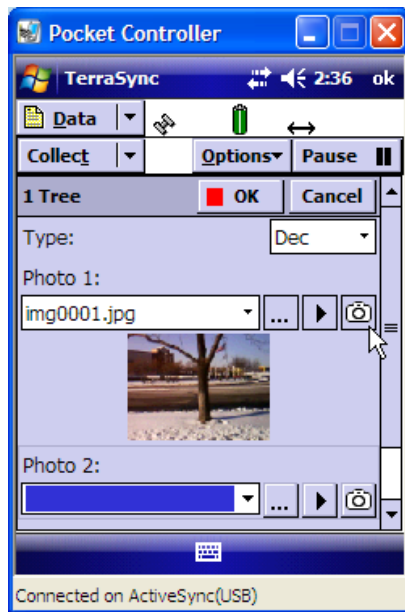
Welcome to MAPPING / GIS Tech Notes - Frontier Precision's monthly e-newsletter!!! MAPPING / GIS Tech Notes is designed to keep you up to date with tips and information on the latest TECHNOLOGY IN MAPPING & GIS PRODUCTS. Our company goal is to help you be more efficient and more profitable by utilizing The most up to date technology.

If this email is not displaying properly, please open the attached PDF file.

Tech Tip

A PICTURE IS WORTH A THOUSAND WORDS!

Digital photography has become commonplace these days. The old adage that a picture is worth a thousand words becomes even more evident when it relates to GIS data collection. When using the Trimble Juno SB, Juno SC, and Nomad Handheld GPS units with an integrated camera, you are able to attribute images to your features in the field. This is especially helpful while working on infrastructure projects. For example, when using Trimble Pathfinder Office and Trimble Terra Sync, all you have to do in the Data Dictionary Editor is create an attribute "Filename" for the feature you wish to create in the Data Dictionary Editor. You can create multiple attribute filenames if you wish to associate several images to the feature. Once this revised Data Dictionary is loaded into Terra Sync, when working in the Field you will now see an attribute filename where you can attach a digital image to the feature. You can collect your imagery on the handheld while you are collecting GPS data, and review the imagery in the field within the attribute field. See the example below:



These image attributes are now associated with your geo-referenced feature and are available for viewing within Trimble Pathfinder Office and within your GIS.

Now, truly, a picture is worth a thousand words.

For more information contact our Tech Support department at

1-888-797-4774.

Tech Support Hotline

888.797.4774

Current Firmware Versions

Trimble TerraSync	3.30
Trimble Pathfinder Office	4.10
Trimble GPSCorrect for ArcPad	2.42
Trimble GPS Analyst Extension	2.10
Trimble TSC2 / TCU Survey Controller	12.42
Trimble ACU/TSCe Survey Controller	11.40
Trimble NetRS	1.20
Trimble NetR5	3.60
Trimble HPB450 / PDL450	2.42
Trimble Geomatics Office	1.63
Trimble TerraModel	10.6
GPS Controller SW (2008 GeoExplorer)	2.20
Data Transfer Utility	1.45
Juno SB & SC GPS FW	3.30
Juno ST GPS FW	3.10
GeoExplorer 2008 Series GPS FW	2.03
GeoExplorer 2005 Series GPS FW	1.82
GeoExplorer 2003 Series GPS FW	1.05A

TRIMBLE NOMAD G SERIES



(click the picture for more info)

Visit www.frontierprecision.com for more information!!! Or click the area links below to reach a Frontier Precision Sales & Solution Specialist.

North & South Dakota

2020 Frontier DR
Bismarck, ND 58504
800.359.3703

Northern Minnesota

2852 7th ST N.
St Cloud, MN 56303
800.944.8557

Twin Cities Metro / Southern MN

8039 24th Ave S.
Bloomington, MN 55425
877.698.3077

Colorado

5855 E Stapleton DR N. Suite140
Denver, CO 80216
800.652.1522